

# CONDENSER TUBE EXPANDER

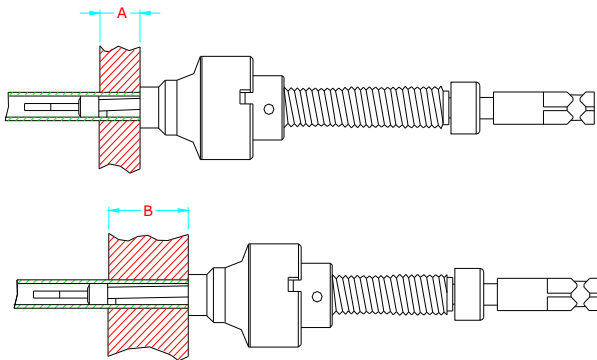


**TUBE TOOLS**

## ✦ 'BAN' SERIES FEATURES:

**Tube O. D.  
1/4" - 3/8"**

- Increased feed angle makes it the fastest operating tool on the market, ideal for high production environment.
- Advantage: Captive mandrel- eliminates nut on mandrel tip which prevents scratching of tube I. D.
- Use - Oil coolers, Radiators, & other apparatus with small diameter tubes..
- NOTE: All 'BAN' series expanders come with 1/4" square mandrel drives. Round mandrel drives are optional.



**Sizes Available : 1/4" O.D. To 3/8" O.D.  
Maximum tube thickness: 18G (1.24mm)  
Tube Expander Fitted with Roller Length: 1" (25.4mm)**

For Tube Inside Diameter  
From (3.8mm) .152" to (8.4mm) .331"

TUBE EXPANDERS FITTED WITH ROLLER LENGTH	FOR TUBE SHEET ADJUSTABLE RANGE	
	MINIMUM A	MAXIMUM B
(25.4mm) 1"	(6.35mm) 1/4"	(25.4mm) 1"

Tube O.D. (Mm) inch	Tube Thickness		Tube I. D.		Minimum I. D. Tool Enters		Maximum Expansion of Tool		EXPANDER with (25.40 ) 1" Long rollers			Ratchet Size Square Inch		
	Bwg	Inch	Mm	Inch	Mm	Inch	Mm	Inch	Mm	Complete Tool No.	Roller Set No.		Mandrel No.	
(6.35) 1/4	18	.049	1.24	.152	3.8	.148	3.7	.167	4.2	B-25018	R-20018	M-21819	1/4	
	19	.042	1.06	.166	4.2	.160	4.0	.180	4.5	B-25019	R-21920	M-21819		
	20	.035	0.88	.180	4.5	.175	4.4	.196	4.9	B-25020	R-21920	M-22021		
	1/4	21	.032	0.81	.186	4.7	.180	4.5	.202	5.1	B-25021	R-22124	M-22021	1/4
		22	.028	0.71	.194	4.9	.190	4.8	.213	5.4	B-25022	R-22124	M-22022	
		23	.025	0.63	.194	5.0	.195	4.9	.216	5.5	B-25023	R-21920	M-22324	
		24	.022	0.55	.200	5.2	.201	5.1	.224	5.7	B-25024	R-22124	M-22324	
		28	.014	0.35	.206	5.6	.217	5.4	.243	6.1	B-25028	R-22830	M-22830	
		29	.013	0.33	.224	5.7	.217	5.4	.243	6.1	B-25028	R-22830	M-22830	
		30	.012	0.30	.226	5.7	.217	5.4	.243	6.1	B-25028	R-22830	M-22830	
(9.53) 3/8	14	.083	2.10	.209	5.3	.204	5.1	.230	5.8	B-37514	R-21920	M-22830	1/4	
	15	.072	1.82	.231	5.8	.225	5.6	.265	6.6	B-37515	R-31516	M-22830		
	16	.065	1.65	.245	6.2	.238	6.0	.278	7.0	B-37516	R-31516	R-31617		
	3/8	17	.058	1.47	.259	6.5	.253	6.4	.293	7.4	B-37517	R-31720	R-31617	1/4
		18	.049	1.24	.277	7.0	.270	6.8	.310	7.8	B-37518	R-31720	R-30018	
		19	.042	1.06	.291	7.3	.285	7.1	.325	8.1	B-37519	R-31720	R-30019	
		20	.035	0.88	.305	7.7	.295	7.4	.335	8.4	B-37520	R-31720	R-32021	
	3/8	21	.032	0.81	.311	7.9	.305	7.5	.345	8.6	B-37521	R-32122	R-32021	1/4
		22	.028	0.71	.319	8.1	.312	7.9	.353	8.9	B-37522	R-32122	R-32122	
		23	.025	0.63	.325	8.2	.318	8.1	.363	9.2	B-37523	R-32324	R-32324	
24		.022	0.55	.331	8.4	.318	8.1	.363	9.2	B-37524	R-32324	R-32324		